



FIRST PRESBYTERIAN CHURCH NEWSLETTER

Albemarle, North Carolina

Reverend Cathy George, Transitional Pastor

Frank Poolos, Director of Vocal and Handbell Music

Stan Scheer, Organist

Jane Snyder, Director of Fellowship & Congregational Care

Melissa Eudy, Part-Time Transitional Director of Christian Education

Shawn Graeff, Part-Time Director of Facilities Maintenance

Kyle Lambert, Office Manager

Beth Poolos, Part-Time Secretary

Church Office: (704) 982-2722

Website: www.fpcalbemarle.org

E-mail: klambert@fpcalbemarle.org



December 2022

From Where I Sit

It's that time of year again when every tv channel and streaming service advertises the Christmas movies we must watch. I do my best as a pastor and a person to keep myself and the congregation I serve focused on Advent and preparing the heart and mind for the coming birth of Christ. I do my best and, while I have no trouble avoiding the Hallmark channel. I do give in to watching 'Elf', 'White Christmas', 'It's a Wonderful Life', 'Christmas Vacation', 'The Christmas Story', and 'Die Hard'...yes, it's a Christmas movie and my most recent Christmas movie fav is 'The Kranks'.

'The Kranks' is a movie based on John Grisham's book, 'Skipping Christmas', which isn't about a juicy lawsuit. Instead, he offers a satirical look at the overblown ritual of the holiday season. The story revolves around a typical, middle-aged American couple, Luther and Nora who decide to skip Christmas one year and spend the money on a Caribbean cruise. Of course they get a lot of pressure from folks to try to get the Kranks to conform, get with the program, and do Christmas the 'right' way.

One reason I like this book and movie is that sometimes it doesn't sound like such a bad idea...this skipping Christmas thing. There have been times in my own life when I've been tempted to skip the whole thing. Don't hate me....it's just a thought and I'm really not recommending that we skip Christmas completely. But if we're to make the paths straight, and prepare the way of the Lord, maybe there are some things we might need to skip. You come up with your own list of things to skip. I have mine.

The writer of the gospel of Luke (3:4) was right. We need to make a straight path to the heart of Christmas. Let's skip the outside and see the inside. Sometimes we need to learn from the least of these where to look. An Arizona businessman and father of four children told a wonderful story of a particular Christmas morning. He said they had a rule at their house that none of the children could go down to see gifts under the tree until the rest of the family was awake and they could all go together. The year David was 7, he came bounding into their bedroom at 4:30 a.m., his face glowing with excitement, his mouth running at about 90 miles an hour. "Daddy! Mother! Come quick! I saw it!" As they wiped the sleep from their eyes, both he and his wife knew what had happened. The rule had been broken. David had already discovered the new bicycle that he'd been wanting for two years. They felt cheated that he'd rushed ahead and they'd missed seeing his discovery, but it was Christmas, after all, and they couldn't scold him for being overanxious. They climbed out of bed, pulled on their robes and slippers, and David took them by the hands, dragging them down the hall. They woke the other children, and with all the family in tow, David led them down the stairs and through the darkened living room toward a window on the eastern side of the house, totally oblivious of the bicycle which sat unnoticed beside the tree. He pointed his little finger to the eastern sky and said, "Look! The Star of Bethlehem! I've seen the star!"

A poem by M. B. Moses sums up the straight path to Christmas nicely:

Walk softly, as you go through Christmas, that each step may bring you down the starlit path, to the manger bed. Talk quietly, as you speak of Christmas that you shall not drown out the glorious song of angels with idle talk and merriment. Kneel reverently as you pause for Christmas, That you may feel again the Spirit of the Nativity, rekindled in your soul. Have trod the Christmas Path, that you may serve more fully, the one whose birth we hail.

‘Prepare the way of the Lord, make his paths straight. Every valley shall be filled, and every mountain and hill shall be made low, and the crooked shall be made straight, and the rough ways made smooth; and all flesh shall see the salvation of God.’” The child was right. Skip the bicycle. See the star.

And that’s the view from where I sit. *Cathy*

Worship Notes

Sunday, December 4 Second Sunday of Advent - Ten-Cents-A-Meal offering for Hunger
 Sunday, December 11 Third Sunday of Advent – Joy Program – Christmas Joy Offering
 Sunday, December 18 Fourth Sunday of Advent - Choral Christmas Presentation
 Saturday, December 24 Christmas Eve Worship
 Sunday, December 25 Nativity of the Lord/Christmas Day

10 CENTS A MEAL

We will receive the Ten-Cents-A-Meal offering for hunger on December 4. This monthly offering is used by the Presbytery of Charlotte to fund hunger programs and agencies (including SCCM) throughout the presbytery.

2023 Flower Calendar



The 2023 flower calendar is posted in the pit stop. If you wish to put flowers in the church in honor or memory of someone or just to provide beauty to the service, please sign up on the calendar. **Flowers may be ordered from any local florist.** Contact Emily Andrew (704-322-5510 or em.andrew21@gmail.com) for more information and to make arrangements for the flowers to be delivered to the church on Saturday or Sunday morning before worship.



SANCTUARY POINSETTIAS



If you would like to contribute to the purchase of 8 ten-inch poinsettias as a Christmas memorial/honorarium, please make a check for \$10.00 payable to *First Presbyterian Church* and designate for poinsettias. **Please return the check along with the form below to the church office by noon Monday, December 12.** A complete list will appear in the bulletin on Sunday, December 18. **Following the Christmas Eve service on December 24, all 8 poinsettias will be delivered to the hospital and local nursing homes.**

SANCTUARY POINSETTIAS & HOLIDAY GREENERY

Please print below the information exactly as it is to appear in the bulletin.

In memory of: _____

Given by: _____

In honor of: _____

Given by: _____

OCTOBER 2022 FINANCIAL REPORT

GENERAL FUND

| Actual: | <u>Year to Date</u> | <u>Budget-to-Date</u> |
|------------------------|---------------------|-----------------------|
| Total Income Received: | 375,129.86 | 417,664.20 |
| Total Expenses: | <u>402,190.05</u> | <u>419,481.00</u> |
| (Shortage)/Surplus | (27,060.19) | (1,816.80) |

GENERAL FUND BUDGET

| | <u>2022</u> |
|-----------------|----------------|
| Pledges: | 494,764 |
| Total Income: | 503,697 |
| Total Expenses: | 503,697 |

Weekly Amount Needed to Keep Commitments: \$9,687

Faith on the Fifth Offering for October: \$970

Average Weekly Amount Received in October: \$8,837

Ten-Cents-A-Meal for October: \$240

We are behind (22,460) in pledges.

2023 OFFERING ENVELOPES

Beginning Sunday, December 4, Offering envelopes for 2023 will be available for pickup in the common area right outside the church office. If your child would like envelopes, please let Kyle know. **NOTE: Envelope numbers change every year.** Remember...**DO NOT USE these envelopes until January of 2023.** *If you have a bank draft and the bank has been instructed to put your envelope number on the check, be sure to update the new envelope number with your bank prior to January 1, 2023.* For questions, please call Kyle at 704-982-2722.

FINANCIAL YEAR END CLOSING

The church office will be closed December 23 through Dec. 27. Office hours will be 9:00 am to 12:00 pm December 28 through December 30. The financial books will close on Dec. 30 at noon. Any contributions made after that date will be deposited in 2023. Please make sure that contributions being mailed are addressed to First Presbyterian Church, 126 W. North Street, PO Box 1578, Albemarle, NC 28002. The office suggests contributions be mailed no later than December 14, due to the Christmas Holiday mail. If you are transferring stock, please do so by December 14 and don't forget to let Kyle know you have made the transfer.

PLEDGE CARDS 2023

If you have not turned in your 2023 pledge card, please do so. It is important that our Stewardship Committee have the latest updated financial information to finalize the 2023 budget. If you need a pledge card, you can find one on the table at each entrance of the sanctuary or in the church office

NEWS & NOTES

Memorials and Honorariums

Scholarship Endowment:

In memory of Peggy Smith, Mother of Kim Andrew, given by Mark & Chris Mabry

Minister's Discretionary Fund:

In memory of Jane Pickler, given by Joe & Ann Snuggs.

In memory of Jane Pickler, given by Mr. & Mrs. Scott Schaaf

In memory of Jane Pickler, given by Mike & Laura McLeod

In memory of Jane Pickler, given by David Linen

In memory of Jane Pickler, given by Gene & Myla Butler

In memory of Jane Pickler, given by Bill & Jane Self

In memory of Jane Pickler, given by John Harrison

In memory of Jane Pickler, given by Jerry Lou Jones

In memory of Jane Pickler, given by Jacob & Pamela Schneider

In memory of Jane Pickler, given by Mary Hammond

In memory of Jane Pickler, given by John & Debbie Hahn

NEWS & NOTES

Sympathy

To the Laton family upon the death of Mike Laton.

To the Pickler family upon the death of Jane Pickler.

To Teresa Samples (Dan & Martha Sue daughter-in-law) family upon the death of her mother Kim Wagner.

To the family of Ronnie & Sarah Michael upon the death of their niece Ashley Lowder.

SESSION NOTES

At the stated session meeting on Sunday, November 20, 2022, Rev. George reported that plans are underway for the Presbytery meeting that FPC is hosting on August 19, 2023. Gina Martin is chairing the planning committee. The worship committee reported that the church will be decorated with greenery on Saturday, November 26. Christmas Eve services will be held at 5:30 p.m. and 11:00 p.m. Communion will be served at both services. The personnel committee reported that the organist search committee has received resumes and will be conducting auditions. The stewardship committee presented some preliminary budget numbers following receipt of pledges. The property committee reported that the plaster work in the sanctuary is complete and has been inspected. The mission committee reported that donations were made to Montana de Luz to replace their van, and to the Mwandu Infant Formula Fund. The Angel Tree will contain 25 names this year. The membership committee reported that the member plaque in the narthex is out of room to add more names, and that they are working with the company that created the current plaque to come up with a solution that will involve modifying the plaque.

Submitted by Mary N. Kesselman, Clerk of Session



Thanks to: Ann Duckwall, Donna Gaither, Linda Anderson, Mildred Andrew, Ruth Goodwin, Donna Gaither, John Hahn, for assisting in the church office in November.

FIRST FAMILY AND THIRD WEDNESDAY VOLUNTEERS-

We could not do these meals without these folks! Linda Anderson, Ruth Cotton, Michelle and Steve Cumming, Ann Duckwall, Peggy Finley, Susan Garrison, Jennifer and Jordan Hesley, Jim Hesley, John Howell, Margaret Ivey, Stephen and Leslie Kinley, Myron and Nancy Lowder, Chris Mabry, Sarah and Ronnie Michael, Lee McLaurin, Frankie Palmer, Ned and Gayle Russell, Lee and Billie Jean Snuggs. Thank you!! We appreciate you so much!!!

Alternative Christmas Gifts

Alternative Gifts go on sale in the Pit Stop November 27 and will continue December 4, 11 and end on December 18. The charities we chose this year are Stanly Community Christian Ministry (SCCM), Presbyterian Disaster Relief and The Esther House.



Angel Tree

This year we are sponsoring 25 children. You can get a name and info off the mission bulletin board in the Pit Stop. Please sign your name on the sign up sheet beside the number that represents your Angel Tree child. Please return your unwrapped gifts in a large plastic bag with the pink or blue card attached to the bag. Gifts should be returned by Sunday, December 11 under the Angel Tree Bulletin board.



NEWS & NOTES

Sunday School News and Updates

ANNOUNCEMENT: We will begin serving breakfast on Sunday mornings at 10:00 in the Pit Stop. In order to make this happen, we need a group willing to help out.



Do you enjoy preparing food for others and hanging out in the kitchen? Come be a part of the Kitchen Crew Sunday School class.

Contact Jane Snyder for more information or to sign up!

Sunday School Sharing Knowledge Through Stories class just started *The Oceanography of the Moon*, By Glendy Vanderah. If you have questions, please contact Courtney Niederer (980-622-7435 or ccniederer@yahoo.com) or Kim Marshall (980-621-6577 or bookworm284@live.com). Hope to see you there!

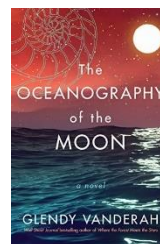
***The Oceanography of the Moon* Reading Schedule:**

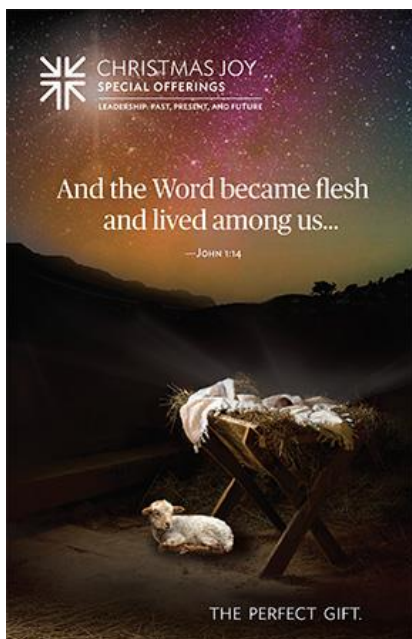
December 4- pg 1-107

December 11- pg 108-215

December 18-pg 216-319

This class will not meet on December 25 or January 1





CHRISTMAS JOY OFFERING

SUNDAY, DECEMBER 11

Every generous act of giving...

is from above.

James 1:17

The only perfect gift ever given was the one we received in Jesus Christ – a perfect gift from a generous God. Your gifts reflect our generous God by supporting leaders in our Church and world – past, present, and future. Please give generously on December 11.

Prayer Shawl Ministry



The Prayer Shawl Ministry will meet on Wednesday, December 7 at 1:30 p.m. in the Parlor. Please contact Peggy Finley at 704-985-1136 or maf447@windstream.net if you have questions.



Circle members will Meet at Second Street Sundries for a lunch/social meeting on December 14 at 11:30 am. We will return to our regular Bible study in January.



January Newsletter Deadline
Tuesday, December 13.
Early submissions are always welcome!
If you type your items in Microsoft Word, please email
them as an attachment to:
bpoolos@fpcalbemarle.org.





SCCM's CARING and SHARING CAMPAIGN

SCCM's 2022 Caring and Sharing campaign is still going on. This campaign began in 2010 and has tremendously impacted our available funds to help our neighbors Who would think that loose change and bills dropped into a little yellow cup could make such a difference? All of us working together makes the Caring and Sharing campaign so successful. In 2021 our Community Tables in Albemarle, Norwood, and Richfield served 48,537 meals. Our Food Pantry distributed 723,641 pounds of food to clients, and the Assistance Center provided \$217,505 in utility, rent and medicine assistance.

Yellow cups are in the Pit Stop. Please return them by Saturday, December 31.

Proceeds from this collection will be used to purchase food and supplies for the Community

Tables and Food Pantry and will provide assistance with client needs.

We appreciated your help so we can continue to provide services to people in need in our community in the future.



Backpack Food Program Donations Needed:

Oatmeal Packets, Breakfast Cookies, Individual Bags of Goldfish, Large Cans of Soup, Saltine Crackers, Tuna Helper, Cans of Tuna, Chicken Helper, Cans of Chicken, Snack Crackers, Pineapple, or Fruit Cocktail Cups

A bin in the pit stop will receive your donation.

Next Packing Date: Wednesday, December 7 at 10:30 a.m.



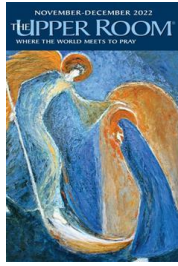
NEW OFFICER TRAINING

Wednesday, December 7, 4 pm to 6 pm

Wednesday, December 14, 4 pm to 6 pm

Wednesday, December 21, 4 pm to 6 pm





THE UPPER ROOM DAILY DEVOTIONAL GUIDE

The Upper Room Daily Devotional Guide exists to:

- offer resources that encourage daily spiritual practice,
- call Christians to a life of living prayer,
- create meaningful, transformational experiences and studies for individuals, small groups, and congregations,
- help people grow deeper in love with God and neighbor,
- support churches in becoming centers of prayer and spiritual formation,
- inspire spiritual leaders to lead with a listening heart, and
- invite the “spiritually curious” to living waters.

The Upper Room devotional guide is available for your use. Daily readings will help Focus your prayer and study.

The Upper Room can be found in the pit stop, the church office, and the narthex

SERRV Orders

Many thanks to all who participated in the SERRV catalog sale. Our sales nearly doubled this year; more families will benefit and their children will be able to go to school. SERRV has provided good service to our church for more than 15 years and most orders are in. We will contact you when your order is ready for pick up.





Community Table

Saturday, December 10th - 9:30 a.m.-1:00 p.m.

On Saturday, December 10th, FPC will host lunch at the Community Table. Volunteers are needed for the following:

- 1) to provide a pot of chili to serve 15-20 people
- 2) to provide a dessert (pound cakes, cookies, or brownies)
- 3) to provide 2 dozen cornbread muffins
- 4) to provide individual fruit cups
- 5) to provide granola bars
- 6) to help serve and clean up on the 10th from 9:30-1:00.

If you are interested in helping out, please contact Linda Anderson.



FIRST PRESBYTERIAN CHURCH PRESENTS THE WINTER ART GALLERY EXHIBIT BY NORTH STANLY MIDDLE SCHOOL STUDENTS

We are so excited that North Stanly Middle School student work will be featured in the art gallery for the month of December! NSMS students have been continuing their study of the elements of shape, line, form and value. We are exploring more with color this month and depicting light with paint in our seasonal paintings. They are learning how to shade and create value, which is the lightness and darkness of a color, as well as demonstrating the illusion of form using these elements of art. In addition, we are exploring more with actual form with sculptures of piñatas!

I hope you enjoy viewing some of the fantastic work that my students have created. As always we are so grateful for the opportunity to display our creativity in your gallery!

~Mrs. Crisco

Rebekah Crisco teaches visual arts at NSMS and has been teaching for 18 years. She is a graduate of Appalachian State University and is also a painter and ceramics artist. She has a home studio where she teaches kids and adult classes. She resides in Oakboro with her husband and 3 children and their dog "Painter".

**The congregation of First Presbyterian Church is invited to meet
the NSMS artists at the Art Gallery Reception
on Wednesday, December 7 from 4:00 p.m.-5:30 p.m.
in the church common area.**



!!! PFEIFFER PFRIENDS ARE NEEDED !!!

The Health Sciences Program of Pfeiffer University continues its presence in downtown Albemarle. Students from across the United States and the world are working on a degree in the Physician’s Assistant or Occupational Therapy Programs. First Presbyterian, along with some other

churches in downtown, are in partnership with these students which is similar to our Silent Partner program for our college students. The main difference is the length of the relationship (each program is 27 months long), and the Pfeiffer student will know who their friend is. It is the hope that there will be communication at least once a month between the friend and the student. On December 16 we will be graduating our first class of OT students. As of January 1, 2023 there will be approx. 100 students on campus.

Your willingness to be a Pfeiffer Pfriend would be a blessing.

For more information, please email Martha Sue at hallmsh@hotmail.com or call her at 704-985-5821.



Pfeiffer Pfriends Informational Sheet.

You are appointed for such a time as this!

Thank you for your interest in the *Pfeiffer Pfriends* Program at the Pfeiffer Health and Science Building in downtown Albemarle. As of to date, there are approximately 150 plus students on campus for our graduate programs. Some of the students are in Albemarle every day while others may be in “rotation” at some point in their 27-month journey.

The *Pfeiffer Pfriends* program is designed to “encourage, support, and friend” students that are many miles away from their home base. The *Pfeiffer Pfriends* are collectively appointed individuals from local churches and the community. There is a special “vetting” process before a student and an individual is paired together.

It is the expectation that the *Pfeiffer Pfriend* will contact the student at least one time a month during the student’s 27-month period at Pfeiffer University. This contact can be in many forms: text, emails, cards, gifts, and the list goes on.

This is not a “silent” program as you are encouraged to reach out to your student and develop a relationship with him/her so that they know they can count on you to answer questions about our community; keep them updated on activities in our community, and most of all “*be there to support them.*” Be on the lookout for “mixer events” where we invite the students and the *Pfeiffer Pfriends* to come together at the campus as a safe way to meet. Our first event was a huge success. Many students and *Pfriends* felt very comfortable with this opportunity to get to meet one another.

You, as a *Pfeiffer Pfriend*, will be given an information sheet that the student has personally filled out. Some students are very forthcoming and detailed with their responses, whereas others are vague, and it might take some time for them to warm up to the idea of sharing what they like.

Things to remember as a *Pfriend*:

- This is **NOT A SILENT** partner program – they will know your name as you will know theirs.
- You are encouraged and asked to stay connected in some form or fashion with your student.
- Remembering that most if not all students are new in town and have a tough curriculum to sort through – they have been reminded and encouraged to respond to any kind of gesture on your part with a simple acknowledgment (thank you) – but do not be discouraged if they do not respond or forget. There is a great deal on their plate.
- Items are given or contacts can be made by:
 - Mail
 - Drop off at the campus through Kelly – just text (704-956-5556) and let her know you are there to drop off a gift and she will come downstairs on the side of the building and receive your gift. (kelly.loflin@pfeiffer.edu)
 - This program is **NOT** about bringing these students to church, but rather whatever you have done to the least of these you have done it unto me. We are to be his hands, his feet, and planting seeds wherever we go.

We want to encourage these students in their studies as they prepare for the journey that lies ahead. We welcome them into our rural community in hopes they will choose to work in our rural community healthcare system.

You are appointed for such a time as this – be their *Pfriend*!

Warm Regards –

Martha Sue Hall 704-985-5821

In an effort to keep the prayer list updated, we would appreciate your help. Please notify the church office (704-982-2722 or bpoolos@fpcalbemarle.org) or Martha Sue Hall (704-985-5821 or hallmsh@hotmail.com) of changes.

Thank you.

prayer Requests



Do you ever see a name on the prayer list and think, *Now who is that?* Or forget what the relationship is? You are not alone as many folks have asked for help with this. The *Prayer List Connection* will refresh all our memories. Folks with chronic needs will be listed for a month in the bulletin. Following that month, we will keep them on the newsletter's *Prayer List Connection* for as long as we are requested to do so. Critical prayer concerns will be added weekly to the prayer list in the bulletin.

Friends of the Congregation:

David & Marsha Bell, friends of Debbie & John Hahn; David has cancer.
Lindsey Clark, wife of Mark Clark, friend of Debbie Hahn; metastatic breast cancer.
Brayden Enzor, grandson of Gus & Pam Holbrook; at home and returned to school after out for eight months.
Calvin Hall, friend of Ruth Goodwin; kidney cancer – physical therapy for stroke.
Lindsey (Whitley) Harward, daughter of Carolyn & Mel Whitley.
Anna Hartsell, daughter of Janet & Gary Hartsell; colon cancer.
Ann Hatcher, mother of Ann Snuggs.
Mikayla Hege, friend of Elizabeth Bryson.
Debbie Hinson, mother of Melissa Eudy.
Anna Lashua, friend of Martha Sue Hall; breast cancer.
Molly Amelia Lowder, low immunity health concerns.
Taylor Blalock Mauldin, nurse at Atrium-Stanly; cancer.
Joyce McLeod, mother of Mike McLeod.
Wendy McInturff, mother of Michelle Cumming.
Maddie McRae, daughter of Renee & Keith McRae; diagnosis & treatment for a brain tumor.
Bryanna Medlin, Hodgkins Lymphoma.
Bern Morehead, III, son of Sally Pleasant & Dr. Bernard “Bernie” Morehead; diagnosed with brain tumor.
James Nunn, nephew of Billie Jean Snuggs; continuing health concerns.
Susan & John Prevatte.
Tim Rodgers, cancer.
Jane Scheer, spouse of Stan Scheer; Spring Arbor.
Johnny Sharp, father of Cathy George.
Garin Stepp, Duchenne Muscular Dystrophy.

Members of the Congregation:

Don Abernathy, multiple myeloma.
Gloria Bryson, Trinity Place.
Doris Forte, Spring Arbor.
Laura Frazier.
Anita Gower.
Claude Harwood.
Don Joines.
Nancy Jolly, Trinity Place.
Polly Moose
Wayne Palmer, home.
Susan Pandich, Stage IV metastatic breast cancer. New address: 336 Middleton Place, Chapel Hill, NC 27516
Jean Rabe, Trinity Place.
Carole Yost, home.



- | | | | |
|-----|--|-----|---|
| 01- | Steve Cumming Ruth Goodwin Catherine Moeller | 16- | Alison Whisnant |
| 02- | Taylor Barbee Lynn White | 17- | Rob McIntyre |
| 03- | Glenn Miller | 18- | Katie Carpenter Mary Green Katie Saltzman |
| 04- | Kate Gibson | 20- | Anna Henkenjohann Morgan Smet |
| 05- | Thora Kilde Nathan Sanges | 21- | Emily Andrew |
| 06- | Scott Bullard | 22- | Joe Snuggs |
| 08- | Pam Morgan Robert McIntyre | 23- | Bill Jolly |
| 10- | Terry Morgan Bill Pickler Seth Richards | 25- | Gloria Bryson Bob Sasser |
| 11- | Mackenzie Smet | 26- | Connie Robinson |
| 13- | Tom Norwood | 27- | Duncan Bryson |
| 14- | Greg Jones | 29- | Campbell Bullard |
| | | 30- | Sally Grantier John Montgomery |
| | | 31- | Mildred Andrew Adrienne Robinson |



- | | | | |
|-----|---|-----|------------------------|
| 04- | Jack & Penny Morton | 21- | Gerald & Lynn Poplin |
| 07- | Charlie & Kelly Lentz | 23- | Craig & Teresa Taylor |
| 10- | Terry & Pam Morgan | 26- | John & Anne Montgomery |
| 15- | Ronnie & Sarah Michael Chris & Barbara Whitley | 27- | Brad & Jane Boone |
| | | 28- | Ben & Shannon Lisk |
| | | 29- | Don & Nancy Joines |

Childcare Information

Bailey Mitchell is in our childcare every Sunday for ages birth-K. Older children are welcome to join in.



Children's Church



There will be no Children's Church during the month of November. Children in K-3 are encouraged to remain in worship. Worship bags are located in the two entrances to the sanctuary with interactive tasks to keep them engaged.

Kindergarten - Fifth Graders

Sunday School

We look forward to seeing you each Sunday morning at 9:45. Mr. Frank will get us started with some music, then Mrs. Kim & Mrs. Angie will share a story with us. We look forward to seeing you each Sunday morning!

Breakfast Bunch

This year Breakfast Bunch will be included in Children's Sunday School (K-5th graders). For the month of December, this will be on the 18th. Please join us for muffins and prayer during Sunday School time (9:45 am) downstairs following music with Mr. Frank.



Kids' Kirk

Join us for Kids' Kirk (formerly known as Children's Church) on December 4 as we explore the elements of worship and what they mean.





Faith Explorers

Enjoy the hustle and bustle of the Advent season. We will resume FE outings in January!

YOUTH NEWS



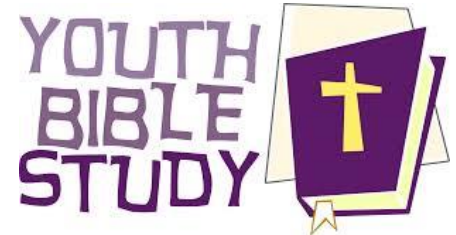
- Dec 4 SNL baking day for Christmas Kitchen 6-8 pm
- 11 Youth Christmas Party 6-8 pm
- 18 Christmas Light Scavenger Hunt and caroling 6-8 pm
Meet at church at 6 pm for the annual Christmas light hunt!
We will do some caroling along the way to spread the Christmas joy.
- 25 Merry Christmas!! Share this time with your family and friends.

Monday Night Bible Study

Who: 9th-12th graders

When: Monday nights at 8:30pm

Where: Debby Johnson's House (1212 Heritage Dr.)



December 5 Thora Kilde
December 10 Seth Richards
December 29 Campbell Bullard

FPC T-SHIRT FUNDRAISER

Help the youth with Montreat expenses for the year by purchasing a tee shirt. Sign up for the color and size you want in the Pit Stop or email Melissa meudy@fpcalbemarle.org.

- Adult and Youth sizes available.
- Short-sleeved \$20, Long-sleeved \$25
- Color samples available in the Pit Stop.



**At Home
Under the Dome**





Montreat

Plan now to join us for MS Montreat (for youth who have finished grades 5-8)

July 19-23

For more information, visit <https://montreat.org/events/msc-23>.



High School Montreat: (youth who have finished 8th-12th grades)

July 9-15



For more information, visit <https://montreat.org/events/myc-23>.



Save the Date for the Joy Program Sunday, December 11 at 11:00 a.m.

The Youth will present the Joy Program during worship on December 11. The Joy Program is called, *O Come Let Us Adore Him*. While the story will be well-known, and the songs will be familiar, you will notice a few new twists on your favorite Christmas carols. Our children will tell us the age-old story of faith. We will have a covered dish following worship.



DRIVE-THRU COMMUNITY CHRISTMAS DINNER AT FIRST LUTHERAN CHURCH (230 SOUTH 2ND ST, ALBEMARLE) SUNDAY, DECEMBER 25 FROM 11:00 A.M.-1:00 P.M.

The Annual Community Christmas Dinner is still ON for this year. It will again be a DRIVE-THRU on Christmas Day (Sunday, December 25). The food will be prepared and packaged by caterer. All of the desserts are being provided by the Albemarle Sweet Shop, and all of the volunteers will be from First Lutheran. The only things we are being asked to provide are 100 Christmas Cards and the monetary donation (700) to help cover the cost of the meals from First Presbyterian Church. Please help us meet this goal by:

1. Giving Generously to the Community Christmas Dinner (in the memo of your check designate "Community Christmas Dinner").
2. First Family, in November and other groups within the church- will have the children color the Christmas cards this year.

CONTACT MARTHA SUE HALL FOR MORE INFORMATION
(704-985-5821 OR HALLMSH@HOTMAIL.COM)



Lessons & Carols
Presented by the Chancel Choir
of First Presbyterian Church

Sunday, December 18...11:00 a.m. Worship Service

The 2022 Advent Choral Service will continue our tradition of tracing the Biblical account of the birth of Christ using scripture followed by contemplative readings. The choir will be accompanied by organist Stan Scheer, the Piedmont Triad String Quartet, and percussionist, Mike Poolos, directed by Frank Poolos.



CHRISTMAS KITCHEN

SUNDAY, DECEMBER 11

FUNDS RAISED WILL HELP PAY FOR
YOUTH TO ATTEND MONTREAT YOUTH
CONFERENCES NEXT SUMMER!

PLEASE STOP BY THE PIT STOP BEFORE AND AFTER
WORSHIP TO PURCHASE ITEMS.

IF YOU ARE WILLING TO DONATE BAKED GOODS,
CASSEROLES, SOUPS, OR ANY OTHER HOMEMADE ITEMS,
PLEASE CONTACT LIZ JOLLY

JOLLYMOM2@GMAIL.COM | 704-699-6699





**CHRISTMAS EVE WORSHIP ON SATURDAY, DECEMBER 24
AT 5:30 P.M. AND 11:00 P.M.**

Carols and candlelight will mark the evening as we celebrate the birth of Christ.

Christmas Candlelighting Service

The musical prelude begins at 5:15 p.m. Highlights will include organ, vocal, and instrumental music. *The traditional candlelight service begins at 5:30 p.m.* Worship includes a story for the children, the Sacrament of the Lord’s Supper, music by the adult choir, sharing the light of Christ, and traditional carol singing.

Worship at 11:00 p.m.

This service includes leadership by older youth and college students, traditional carol singing, the Sacrament of the Lord’s Supper and sharing the light of Christ. This service is full of expectation as we move toward midnight and the birth of Christ. Dress is informal. Following worship, youth and their families are invited to enjoy a light breakfast and fellowship.

Prayer & Bible Study Opportunities



Morning Prayer on Mondays and Wednesdays at 10:00 a.m. via Zoom

First Presbyterian’s Zoom Morning Prayer meets on Monday and Wednesday mornings at 10:00 am. We welcome your participation and invite you to email Deb Hahn at hahnjdt@ctc.net for the information needed to join our prayer group. We pray for our state, nation and world. If you would like to make a prayer request please email Deb Hahn at hahnjdt@ctc.net or text her at 704 985-9419. Occasionally we do not meet but we keep in touch via email and texts and pray for whatever needs or thanks are brought to our attention. **We will not meet on December 26th or 28th,** but we will continue praying.

Bible Study and Conversation via Zoom on Thursdays from 4:00 p.m.-5:00 p.m.

Matt and Catherine Moeller continue to lead Bible study on Thursdays from 4:00 p.m.-5:00 p.m. on Zoom. Each week, we discuss the Scripture that will be used as the basis for the sermon the following weekend. We analyze the Scripture reading itself and discuss how to apply it in our lives. We also have a time in prayer. Please join us. If you have any questions, please contact Matt and Catherine (mattandcatherine@hotmail.com or 509-539-9482).





**FIRST FAMILY GATHERING
WEDNESDAY, DECEMBER 7 AT 6:00 P.M.
DINE IN GYM**

IN-PERSON FIRST FAMILY GATHERING on Wednesday, December 7 at 6:00!
Mark your calendars:

- **FIRST WEDNESDAY OF EVERY MONTH IN-PERSON**
- **THIRD WEDNESDAY OF EVERY MONTH DRIVE-THROUGH**

December Menu: Vegetable Soup, Salad, Oyster Crackers and assorted Desserts, Tea, Water and Lemonade.

Contact the church office 704-982-2722 or klambert@fpcalbemarle.org by noon on Tuesday, December 6 to say you're coming.

Due to the cost of food our Suggested Donation is \$6 per person....
Maximum of \$20 per immediate family.

Please come with correct change or a check written to First Presbyterian Church.

We will have Christmas cookie decorating and other activities for the kids after dinner!



Volunteer's Needed for IN-PERSON First Family Gathering

- Tuesday Morning Crew: December 6 @ 9:30am
- Wednesday Morning Crew: December 6 @ 9:30am
- Final Prep Crew: Wednesday, December 7 @ 5:00pm
- Clean-up crew: Wednesday, December 7 @ 6:45pm

Please call Jane Snyder at the church 704-982-2722 or on her phone 704-438-3358 or email her at jsnyder@fpcalbemarle.org if you would like to help☺



**DRIVE-THRU MEAL
WEDNESDAY, DECEMBER 14
FROM 5:00 P.M.- 6:00 P.M.**

**RSVP BY 2:00 P.M. ON MONDAY, DECEMBER 12
PICK-UP OR DELIVERY OF THE MEAL**

Take a break from cooking on the **THIRD WEDNESDAY** of every month and just **DRIVE-THRU** the church parking lot and pick up a plate of food!
Please RSVP by Monday, December 12 by 2:00 p.m. Let Jane Snyder know if you would like to volunteer in any capacity.

This will not work without volunteers!

We will have your meal ready for pick-up between 5:00-6:00 pm

Menu:

Chicken and Wild Rice, Green Beans, Copper Pennies, and Apple Crumb.

Due to the cost of food our Suggested Donation is \$6 per person....
Maximum of \$20 per immediate family.

Please come with correct change or a check written to First Presbyterian Church.

All we need you to do is:

call Anne Montgomery at 704-796-5841 or email Anne at johnandannemontgomery@yahoo.com and let her know:

- **how many plates you need**
- **if you would like dessert**
- **if it will be a pickup or delivery (include address and any special instructions)**



Volunteer's Needed for DRIVE-THRU-

Tuesday Morning Crew: December 13 @ 9:30 am
Wednesday Morning Crew: December 14 @ 9:30 am
Plating Crew: Wednesday, December 14 @ 4:00 pm
Drive-Thru crew: Wednesday, December 14 @ 5:00 pm

Please call Jane Snyder at the church 704-982-2722 or on her phone 704-438-3358 or email her at jsnyder@fpcalbemarle.org if you would like to help☺

First Presbyterian Church

**Lunch Outing to OFF THE SQUARE
Thursday, December 1st
at 11:30 am**

Let's get together for lunch – Dutch Treat! We will meet at OTS at 11:30 am.
Let us know if you can join us! Jane Snyder 704-438-3358



**Thursday, December 1**

4:00 pm Zoom Bible Study with Catherine & Matt Moeller

Sunday, December 4

*2nd Sunday of Advent/Ten Cents a Meal Offering/
Alternative Gifts before & after worship*

9:45 am Sunday School
11:00 am *Worship
6:00 pm to 8 pm SNL Baking for Christmas Kitchen

Monday, December 5

10:00 am Morning Prayer via Zoom
8:30 pm High School Bible Study –home of Debby Johnson

Wednesday, December 7

6:45 am Men's Prayer Breakfast
10:00 am Morning Prayer via Zoom
10:30 am Packing of the Back Packs
1:30 pm Prayer Shawl in Parlor
4:00 pm New Officer Training
4:00 pm -5:30 pm Art Gallery Reception
6:00 pm First Family Gathering Dinner in Gym
6:45 pm Chancel Choir Rehearsal

Thursday, December 8

4:00 pm Zoom Bible Study with Catherine & Matt Moeller

Sunday, December 11

*3rd Sunday of Advent
JOY Program & Luncheon/JOY Gift Offering/Alternative Gifts/
Christmas Kitchen before & after worship*

8:45 am Diaconate Meeting
9:45 am Sunday School
11:00 am *Worship
12:00 pm Lunch in gym
6:00 pm to 8:00 pm Youth Christmas Party

Monday, December 12

10:00 am Morning Prayer via Zoom
12:00 pm Sanctuary Poinsettias Deadline
8:30 pm High School Bible Study –home of Debby Johnson

Wednesday, December 14

6:45 am Men's Prayer Breakfast
10:00 am Morning Prayer via Zoom
4:00 pm New Officer Training
5:00 pm Drive Thru Meal
6:15 pm Chancel Choir Rehearsal

Thursday, December 15

10:00 am Staff Meeting
4:00 pm Zoom Bible Study with Catherine & Matt Moeller
4:30 pm Chancel Choir w/strings Rehearsal

Sunday, December 18

*4th Sunday of Advent/Choral Christmas Presentation/Alternative
Gifts before & after worship*

8:30 am Session
9:45 am Sunday School
9:45 am Breakfast Bunch (K-5th graders)
11:00 am *Worship
6:00 pm to 8:00 pm Christmas Light Scavenger Hunt

Monday, December 19

10:00 am Morning Prayer via Zoom
8:30 pm High School Bible Study –home of Debby Johnson

Wednesday, December 21

6:45 am Men's Prayer Breakfast
10:00 am Morning Prayer via Zoom
4:00 pm New Officer Training
6:00 pm Chancel Choir Rehearsal (Party)

Thursday, December 22

4:00 pm Zoom Bible Study with Catherine & Matt Moeller

Saturday, December 24

Christmas Eve

5:00 pm Christmas Eve Musical Prelude
5:30 pm Christmas Eve Worship
11:00 pm Christmas Eve Worship & Breakfast

Sunday, December 25

*Nativity of the Lord/Christmas Day/Community Christmas
Dinner*

9:45 am Sunday School
9:45 am Breakfast Bunch (K-5th graders)
11:00 am *Worship
11:00 am to 1:00 pm Drive Thru Community Christmas Dinner
First Lutheran Church

Monday, December 26

*Church Office Closed
No Morning Prayer via Zoom
No High School Bible Study*

Tuesday, December 27

Church Office Closed

Wednesday, December 28

No Morning Prayer/No Chancel Choir Rehearsal
6:45 am Men's Prayer Breakfast

Thursday, December 29

4:00 pm Zoom Bible Study with Catherine & Matt Moeller

THOSE WHO SERVE IN DECEMBER

Ushers: Wes Eudy (captain), Nathaniel Eudy, Cidney Eudy, Brett Richards, Seth Richards.

Elder Greeters: Andy McLeod, Mary Kesselman

Acolytes:

December 4: Jordan Hesley
December 11: Leo McLeod
December 18: Carter Gibson
December 25: Nathaniel Eudy

Outside Ushers:

December 4: Jm Marshall, Tom Norwood
December 11: Chris Whiltey, Jack Mortyon
December 18: Ronnie Michael, Lee Snuggs
December 25: Jim Ivey, John Earnhardt

Sound:

December 4: Evan Sanges
December 11: Evan Sanges
December 18: Evan Sanges
December 25: Evan Sanges

Filming:

December 4: James Cotton
December 11: Elizabeth Bryson
December 18: Jackson Palmer
December 25: Andy McLeod

Nursery for November:

December 4: Bailey Mitchell
December 11: Bailey Mitchell
December 18: Bailey Mitchell
December 25: Bailey Mitchell

Kids' Crew:

December 4: Jackson Palmer
December 11: Thora Kilde
December 18: Natalie Taylor
December 25: Cidney Eudy

| |
|-----------------------|
| <u>Elders</u> |
| Al Andrew |
| John Earnhardt |
| Bill Jolly |
| Mary Kesselman |
| Mike King |
| Ken Knight |
| Kim Marshall |
| Andy McLeod |
| Catherine Moeller |
| Sandy Rogers |
| Ellen Snyder |
| Chris Whitley |
| Ellen Whitley |
| <u>Deacons</u> |
| Emily Andrew |
| Keith Bryson |
| Shannon Bullard |
| Michelle Cumming |
| Wes Eudy |
| Martha Sue Hall |
| Lillie Hancock |
| Jim Hesley |
| Liz Jolly |
| Myron Lowder |
| Laura McLeod |
| Lee Snuggs |

Church Website Address & Staff Email Addresses

| | |
|--------------------------------|---------------------------|
| Church Website Address: | www.fpcalbemarle.org |
| Church Email Address: | klambert@fpcalbemarle.org |
| Rev. Cathy George: | cgeorge@fpcalbemarle.org |
| Kyle Lambert: | klambert@fpcalbemarle.org |
| Jane Snyder: | jsnyder@fpcalbemarle.org |
| Stan Scheer: | sscheer@fpcalbemarle.org |
| Beth Poolos: | bpoolos@fpcalbemarle.org |

