



The Weekly Bulletin
FIRST PRESBYTERIAN CHURCH

Albemarle, North Carolina
Matt Drumheller, Pastor

Church Office: (704) 982-2722

Website: www.fpcalbemarle.org

January 3, 2021

GATHERING BEFORE GOD

MORNING MEDITATION

*Unclench your fists
Hold out your hands.
Take mine.
Let us hold each other.
Thus is his Glory Manifest.*

Epiphany
By Madeleine L'Engle

PRELUDE

What Child Is This?

Richard I. Purvis

PEALING OF THE BELLS

LIGHTING OF THE CHRIST CANDLE

Cooper Atwater

OPENING SENTENCES

Arise, shine; for your light has come,
And the glory of the Lord has risen upon you.

Isaiah 60:1

CONCERNS OF THE CHURCH

CALL TO WORSHIP

Anne Montgomery, liturgist

There is good news of great joy for all!
Our Savior is born: the Messiah, the Lord.
Tell the good news throughout the earth:
The saving grace of Jesus Christ is for all.
Let us worship God.

PRAYER OF THE DAY

Eternal God, by a star you led magi to the worship of your Son. Guide us by your light, that we may see your glory; through Jesus Christ our Lord, who taught us to pray, saying, Our Father, who art in heaven, hallowed be thy name. Thy kingdom come, thy will be done, on earth as it is in heaven. Give us this day our daily bread, and forgive us our debts as we forgive our debtors. And lead us not into temptation, but deliver us from evil, for thine is the kingdom, and the power, and the glory, forever. Amen.

HYMN 152 *What Star Is This, with Beams So Bright* Puer nobis nascitur

What star is this, with beams so bright, more lovely than the noon-day light?
'Tis sent to announce a newborn king, glad tidings of our God to bring.

'Tis now fulfilled what God decreed, *From Jacob shall a star proceed;*
And lo! The eastern sages stand to read in heaven the Lord's command.

While outward signs the star displays, an inward light the Lord conveys
And urges them, with tender might, to seek the giver of the light.

O Jesus, while the star of grace impels us on to seek your face,
Let not our slothful hearts refuse the guidance of your light to use.

First Presbyterian Church
Worship Archive
January 6, 2019

PRAYER OF CONFESSION

Silence

God our Savior, you offer us a guiding star, yet we confess that we fail to follow your revelation. You have searched for us, and yet we hide from you. You have lavished us with blessing, and yet we treasure earthly things. You have given us the tools we need to care for one another, yet we turn away from the poor, we ignore the cries for justice, and we do not strive for peace. Forgive us, God of grace.

ASSURANCE OF FORGIVENESS

Friends, believe the good news.

In Jesus Christ, we are forgiven.

RESPONSE TO FORGIVENESS

Joy to the World

Antioch

hymn 134, stanza 3

**No more let sins and sorrows grow, nor thorns infest the ground;
He comes to make his blessings flow far as the curse is found.
Far as the curse is found, far as, far as the curse if found.**

PROCLAMATION OF THE WORD

FAITH SHARING WITH CHILDREN

At the conclusion of Faith Sharing with Children, children in grades K-2nd are encouraged to remain in worship.

ANTHEM

We Three Kings

Craig Courtney

The Piedmont Triad String Quartet, Percussion, and Organ

We three kings of orient are; bearing gifts we traverse afar.
Field and fountain, moor and mountain, following yonder star.

Refrain:

**O star of wonder, star of night, star with royal beauty bright,
Westward leading still proceeding, guide us to the perfect light.**

Born a King on Bethlehem's plain, gold I bring to crown Him again,
King forever, ceasing never, over us all to reign. *Refrain*

Frankincense to offer have I, incense owns a Deity nigh;
Prayer and praising, voices raising, worshipping God on high. *Refrain*

Glorious now behold Him arise; King and God and sacrifice;
Alleluia, alleluia, sounds through the earth and skies. *Refrain*

PRAYER FOR ILLUMINATION

SCRIPTURE READING

[*Matthew 2:1-12*](#)

This is the Word of the Lord

Thanks be to God.

SERMON

Revealed

Reverend Drumheller

AFFIRMATION OF FAITH

We trust in Jesus Christ, fully human, fully God. Jesus proclaimed the reign of God: preaching good news to the poor and release to the captives, teaching by word and deed and blessing the children, healing the sick and binding up the brokenhearted, eating with outcasts, forgiving sinners, and calling all to repent and believe the gospel. Amen.

First Presbyterian Church
Worship Archive
December 24, 2017

First Presbyterian Church
Worship Archive
December 22, 2019

Sermons are posted on the
church's website
(www.fpcalbemarle.org).
You can usually find the
previous Sunday's sermon
by Wednesday

This is an excerpt from the
Brief Statement of Faith,
written in 1983.
We use this affirmation in
the season of Epiphany as
we celebrate the revelation
of who Jesus was.

HYMN 150

As with Gladness Men of Old

Dix

First Presbyterian Church
Worship Archive
January 6, 2019

As with gladness men of old did the guiding star behold;
As with joy they hailed its light, leading onward, beaming bright;
So, most gracious Lord, may we evermore be led to thee.

As with joyful steps they sped, Savior, to thy lowly bed,
There to bend the knee before thee, whom heaven and earth adore;
So may we with willing feet ever seek thy mercy seat.

As they offered gifts most rare at thy manger, rude and bare,
So may we with holy joy, pure and free from sin's alloy,
All our costliest treasures bring, Christ, to thee, our heavenly king.

Holy Jesus, every day keep us in the narrow way;
And when earthly things are past, bring our ransomed souls at last
Where they need no star to guide, where no clouds thy glory hide.

RESPONDING TO THE WORD

PASTORAL PRAYER

PRESENTATION OF TITHES AND OFFERINGS

Invitation

Offertory *O Morning Star, How Fair and Bright* Johann Christoph Bach

Prayer of Dedication

THE SACRAMENT OF THE LORD'S SUPPER

Invitation

Prayer of Thanksgiving

Words of Institution

Celebration

Prayer

CHARGE AND BENEDICTION

BENEDICTION RESPONSE *May the Road Rise to Meet You* Mark Schweizer

May the road rise to meet you, may the wind be always at your back,
may the sun shine warm upon your face; may the rain fall soft upon your field,
and until we meet again, may God hold you in the hollow of his hand.

First Presbyterian Church
Worship Archive

PERMISSIONS: *What Child Is This?*, Hymn tune: *Greensleeves*, arranged for organ by Richard I. Purvis (1913-1994) © 1944, *Hal Leonard Corporation*. Used with permission under One License A-709512. *What Star Is This?*, Text: Charles Coffin (1676-1749) 1736, trans. John Chandler, 1837. Hymn tune: *Puer nobis nascitur*. Michael Praetorius (1571-1621). Public domain. *Joy to the World*, Text: Isaac Watts (1674-1748) 1719, Hymn tune: *Antioch*. George Frederick Handel (1685-1759) 1742. Public domain. *We Three Kings*, Text and hymn tune *Kings of Orient*: John Henry Hopkins (1820-1891) 1857, Anthem: Craig Courtney (b. 1954) © 2010, *Beckenhorst Press Inc*. All rights reserved. Used with permission under One License A-709512. *As with Gladness, Men of Old*, Text: William Chatterton Dix (1837-1898) c. 1858. Hymn Tune: *Dix*. Conrad Kocher(1786-1872) 1838. Public domain. *O Morning Star, How Fair and Bright*, Hymn tune: *Wie schön leuchtet der Morgenstern*. Johann Christoph Bach (1642-1703). Public domain. *May the Road Rise to Meet You*, Text: Traditional Irish Blessing, Music: Mark Schweizer (1956-2019) © 2001, *St. James Music Press*. Used with permission ID 1291.

Thank you to Katherine Jolly, Andy McLeod, and Ken Knight for helping to create this morning's video. Thank you to Anne Montgomery for participating in worship this morning.

The acolyte today is Cooper Atwater.

There is no Children's Church today. Children in grades K-2 are encouraged to remain in worship.

As is our custom, we will receive the Ten-Cents-A-Meal Offering on the first Sunday of each month. Your generous support of this offering provides food for families in Stanly County and throughout our Presbytery. You may participate in the offering by giving online or mailing a check to the church.

The Sacrament of the Lord's Supper on Sunday, January 3

On Sunday, January 3, we will celebrate the Sacrament of the Lord's Supper in worship. Please plan to join us in taking this sacrament in our separate homes.

We ask that you keep these people in your prayers: Mary Kratz (diagnosis of breast and ovarian cancer), Bailey Long (serious snowboarding accident), The family of Betty Hahn (mother of John Hahn), Lindsey (Whitley) Harward (Myeloid Lukemia; admitted to Medical University of South Carolina-Charleston), Dick Liles, Bede Karr, Sandy Saunders, Ann Upchurch, Jean Rabe, Jane Scheer, Don Joines, Jane Pickler. See newsletter for complete list.

Please stop by the church and sign a hymnal for Susan Pandich. Call the church office before you to come to make sure someone is in the building (704-982-2722).

In an effort to keep the newsletter prayer list updated, please notify the church office (704-982-2722 or pknighnten@fpcalbeamarle.org) or Martha Sue Hall (704-985-5821 or hallmsh@hotmail.com) of changes.

Gaither Endowment Grant Applications...The Endowment Committee will accept applications for grants from the Gaither Endowment until January 15. Applications are available in the church office. If you have questions, contact the church office (704-982-2722 or klambert@fpcalbeamarle.org).

OFFICERS' RETREAT AND ORDINATION & INSTALLATION

Elders and deacons will gather for the annual Officer's Retreat on January 8-9. Please keep them in your prayers as they worship, plan, and prepare to serve God through First Presbyterian Church. After the retreat, our newest officers will be ordained and/or installed on Sunday, January 10 to begin their work and service.

Youth Club resumes Wednesday, January 13.

SCCM FOOD PANTRY NEEDS



Immediate Needs

- Spaghetti Sauce
- Mashed Potatoes
- Chef Boyardee or other canned pasta
- Cereal
- Jelly

Ongoing Needs

- Canned Carrots
- Canned Potatoes
- Canned Mixed Vegetables



Warm Gifts of Winter Donations

Drop-off at the First Family Drive-Thru on Wednesday, January 6

This winter, please help us spread the warmth to our friends in the community by bringing new and gently used scarves, mittens, gloves, socks, and toboggans through the First Family Drive-Thru on Wednesday, January 6 from 5:00 p.m.-6:00 p.m.! We will donate these warm gifts to children at Central Elementary School and the SCCM Clothing Closet.

FIRST FAMILY MEAL WEDNESDAY, JANUARY 6 FROM 5:00 P.M.-6:00 P.M.

RSVP BY 2:00 P.M. ON MONDAY, JANUARY 4

First Family Meal Pick-up or Delivery is on Wednesday, January 6! Unfortunately, we are still unable to gather for First Family in January. If you would like a First Family meal, please RSVP by Monday, January 4 at 2:00 p.m., and we will have your meal ready for pick-up or delivery on Wednesday, January 6 between 5:00 p.m.-6:00 p.m. For your safety, kitchen staff will wear masks and gloves while preparing your plates.



Menu:

- Greg Lisk's Chicken Alfredo over pasta with a Caesar Salad
- King's cupcakes in celebration of Epiphany

(Also known as...Cinnamon cupcakes filled with cinnamon whipped cream cheese and vanilla cream cheese frosting)

**Suggested Donation: \$5 per person....Maximum of \$15 per family.
Please come with correct change or a check written to First Presbyterian Church.**

All we need you to do is:
call Anne Montgomery at 704-982-7823 or email Anne at johnandannemontgomery@yahoo.com
and let her know how many plates and desserts you need,
and
if it will be a pickup or delivery (include address and any special instructions).

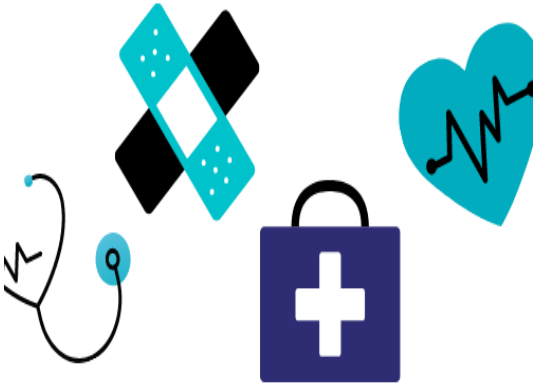


Backpack Food Program Donations Needed:

Oatmeal Packets, Breakfast Cookies,
Individual Bags of Goldfish, Large Cans of Soup, Saltine Crackers, Tuna Helper,
Snack Crackers, Pineapple, or Fruit Cocktail Cups
Donations may be dropped off at the church.

Packing Date: Wednesday, January 20 at 10:30 a.m.

2021 Community Health Assessment Survey



Do you have an opinion about health issues and community concerns? Do you want to make a difference? If you answered yes to one or both of these questions, here is your opportunity to be heard. The Stanly County Health Department and Atrium Health Stanly are jointly conducting the 2021 Community Health Assessment. A public opinion survey is a key component of this assessment. Stanly County residents 15 years old and older are being asked to complete this survey. The

survey can be accessed at the Stanly County Health Department's website <http://health.stanlycountync.gov/> or Stanly County's website <https://www.stanlycountync.gov/> from January 14 through February 17, 2021. It will only take 15-20 minutes to complete a survey.

Why should you complete a survey?

1. Your input makes a difference as the results from the survey are used by the hospital and health department to help determine their priorities and develop action plans.
2. You help bring funds to Stanly County as this report is used by county municipalities, agencies, organizations and others to obtain grants. Most grantors request a community health assessment when writing grants. This community health assessment report can be used to meet that requirement.

If you would like more information about this community health assessment, please contact Debbie Bennett at 704-986-3016 or dbennett@stanlycountync.gov.

OPPORTUNITIES THIS WEEK

Sunday, January 3

Epiphany/The Sacrament of the Lord's Supper/

Ten-Cents-A-Meal Offering for Hunger

9:45 am-10:30 am Adult Sunday School via Zoom

10:15 am Children & Youth Sunday School via Zoom

11:00 am Online Worship

5:00 pm Youth Group Christmas Party

Monday, January 4

Deadline to RSVP for First Family Dinner

10:00 am Morning Prayer via Zoom

8:00 pm Monday Night Bible Study with Matt

Wednesday, January 6

Bring Warm Gift Items to First Family Drive-Thru Pick-Up

6:45 am Men's Prayer Breakfast Zoom Meeting

10:00 am Morning Prayer via Zoom

11:00 am Staff Meeting

1:30 pm Prayer Shawl Ministry (Pit Stop)

5:00 pm-6:00 pm First Family Meal Pick-Up & Bring Donations of Warm Gifts

Thursday, January 7

4:00 pm-5:00 pm Zoom Bible Study with Catherine & Matt Moeller

Friday, January 8 *Officer's Retreat*

Saturday, January 9 *Officer's Retreat*

Sunday, January 10

Ordination & Installation of New Officers

9:45 am-10:30 am Adult Sunday School via Zoom

10:15 am Children Sunday School via Zoom

11:00 am Online Worship

5:00 pm Youth Group

Your on-going support of First Presbyterian Church is essential to the mission and ministry of the church and to the well-being of our ministry partners, locally and globally.

Thank you for your generosity.

**Tithes and offerings may be mailed to:
First Presbyterian Church
P.O. Box 1578
Albemarle, NC 28002**

**Online giving can be done through the
church's website
(www.fpcalbemarle.org).
Click on the GIVE button.**

All staff members are working at home whenever possible to limit the risk of COVID exposure. While there is often someone present at the church, the building will be open sporadically. If you need to come by the church, please call first to make sure the building is open. The church's answering machine is being checked periodically; however, in case of an emergency, please contact Matt (540.449.5319) directly.

HAPPY BIRTHDAY!
JANUARY
03-Mike McLeod
Sandy Rogers
04-Sandy Saunders
05-Austin Coats
Miriam Russell
06-Shannon Lisk
09-Isabel McIntyre
10-Rita Morgan
Jacob Palmer
HAPPY ANNIVERSARY!
JANUARY
05-John & Debbie Hahn